

LEDglo Refrigeration Light

Horizontal Refrigeration Shelf Light

Before you begin, read these instructions completely and carefully. If you have any questions regarding the proper use, installation, or safety considerations of this product, please visit our website or contact spirit LED Lighting.

Spirit LED Lighting
11448 Pagemill Road
Dallas TX. 75243
Tel + 1-972-444-8400
Fax + 1-972-444-8424
www.spiritledlighting.com

Thank you for purchasing Spirit LED Lighting Horizontal Fixture Shelf Light.

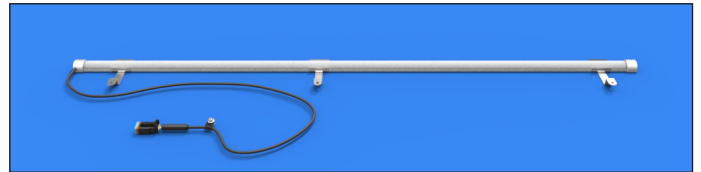
Tools needed:

Your kit includes:

- * Model: LEDglo
- * Mounting Brackets (Qty 2)
- * #8 Self-Taping Screws (Qty 4)
- * 75W Power Supply
- * TYCO 6-WAY DISTRIBUTOR (Qty 1)
- * Extension power cables

- * 1/8" Drill Bit
- * Wire Cutters
- * Phillips Head Screwdriver

Model: LEDglo



PS24V100W-01



PRODUCT SPECIFICATIONS

Luminaire

PARAMETER	VALUE
Input Power	8 Watts
Input Voltage Range	24V DC
Operating Temp. Range	-25 to 40C
Humidity	
Environment	Dry, Damp

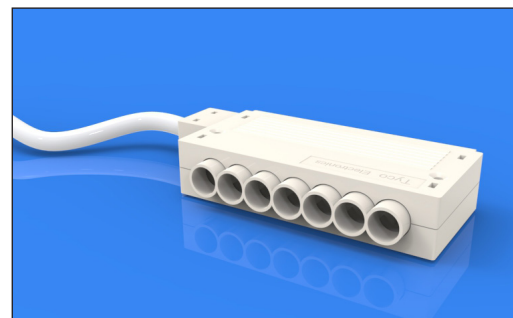
*Due to constant power design input (Lin) will vary depending on input voltage. Be sure to size wire awg accordingly for worst case input voltage.

Power Supply

PARAMETER	VALUE
Rated Power Output	75 Watts (100 Watts Max)
Voltage Range	24V DC
Output Current	4.1 Amps
Input Voltage	120/277V AC
Input Frequency	50/60 HZ
Operating Temp. Range	-40 to +55C
Environment	Dry, Damp

	In	mm
Case Length	8.34	212.00
Case Width	1.70	43.00
Case Height	1.18	30.00
Mounting Length	9.45	240.00
Mounting Width	1.22	31.00
Overall Length	9.45	240.00

TYCO 6-WAY DISTRIBUTOR



Spirit LED Lighting
11448 Pagemill Road
Dallas TX. 75243

Tel + 1 972-444-8400
Fax + 1 972-444-8424
info@spiritledlighting.com

Product information is subject to change without notice.
© 2020 Spirit LED Lighting. All Rights Reserved.

www.spiritledlighting.com